

Invertigo at the APDA West Coast Parkinson's Educational Forum

by Monica Miklas

DTP teacher Heidi Buehler and Community Programs Manager Monica Miklas traveled to Irvine on October 20 for the American Parkinson Disease Association's West Coast Parkinson's Educational Forum. The forum featured a keynote from Dr. Melita Petrossian and a dance class by Larissa Schiano-Gonzalez, a teacher visiting from Staten Island, NY. Heidi and Monica enjoyed getting to help Larissa lead class and learning some new moves from her, too! Invertigo Artistic Director and DTP Co-Founder Laura Karlin joined the team in the afternoon to lead two fun DTP demo classes for conference attendees. The whole Invertigo team valued the opportunity to learn more about PD resources in Orange County and connect with APDA's leadership team.

Venue Spotlight: The Wallis Annenberg Center for the Performing Arts



The Wallis Annenberg Center for the Performing Arts in Beverly Hills has been a Dancing Through Parkinson's partner since 2015. Classes are currently held at The Wallis on Tuesdays from 11:30am - 12:30pm.

Since opening its doors in October 2013, The Wallis has produced or presented more than 150 dance, theatre, opera, classical music, and family programs to an ever-expanding audience. The mission of The Wallis is to create, present and celebrate unique performing arts events and educational programs that reflect the rich cultural diversity of our community. The Wallis is a breathtaking 70,000-square-foot venue that celebrates the classic and the modern and was designed by Zoltan E. Pali, FAIA of Studio Pali Fekete architects. The building features the restored, original 1933 Beverly Hills Post Office (on the National Register of Historic Places) that serves as the theater's dramatic yet welcoming lobby, and houses the 150-seat Lovelace Studio Theater, GRoW at The Wallis: A Space for Arts Education (a gift of Gregory Annenberg Weingarten and Family and the Annenberg Foundation) and the contemporary 500-seat, state-of-the-art Bram Goldsmith Theater. To learn more about The Wallis visit www.TheWallis.org.

This program is funded in part by:



DEPARTMENT OF CULTURAL AFFAIRS
City of Los Angeles



IMPORTANT DATES & HOLIDAY CLOSURES

- **Tuesday, November 6** - Our monthly class at Plaza de la Raza is 11:00 am - Noon
- **Thursday, November 22** - Thanksgiving - No class at the Culver Palms YMCA in Culver City
- **Monday, December 24** - Christmas Eve - No class at Electric Lodge in Venice
- **Tuesday, December 25** - Christmas - No classes at the Wallis in Beverly Hills or LA Star Dance in Tarzana
- **Thursday, December 27** - No class at Culver Palms YMCA in Culver City
- **Monday, December 31** - New Year's Eve - No class at Electric Lodge in Venice
- **Tuesday, January 1** - New Year's Day - No classes at the Wallis in Beverly Hills or LA Star Dance in Tarzana

A Season of Giving and Gratitude

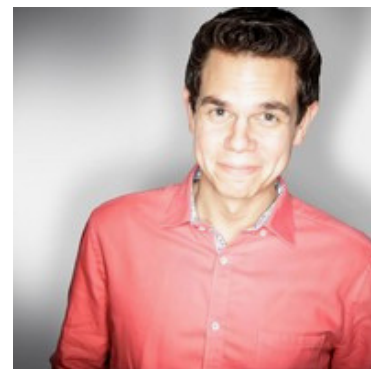
As we move into this season of celebration and thanksgiving, we are truly grateful to have a community that uplifts and inspires us to grow and share the joy of dance with people of all ages and abilities. **Thank you for your unwavering support!**

As you look toward a new year, we ask you to **please continue to invest in Invertigo with a generous donation today**. Your support directly contributes to our year-round Dancing Through Parkinson's classes, the Invert/ED education program, and the creation of new, radical productions. The majority of our budget goes to paying people: dancers, teaching artists for Dancing Through Parkinson's and Invert/ED, staff, designers, and artists. Invertigo is committed to paying fair wages to artists and staff, but we can't uphold this value without your support.

Please consider a donation today. To donate: **call** (424) 229-2141, **visit us online** at www.InvertigoDance.org/support or **mail a check** payable to "Invertigo Dance Theatre" to: 11166 Lucerne Ave. Culver City, CA 90230. Thank you!

Meet an Invertigo Board Member: Alex Calle

Alex Calle has been an Invertigo Board Member since 2016. He is currently the CEO of Entertainment Design Corporation (EDC), a company comprised of over 30 artists that designs and produces Branding Icon Attractions, Themed Retail Experiences, and Live Shows. A graduate of the California Institute of the Arts, he has worked on Film, Television, Theater, Themed Entertainment, and Public Art Installations all over the world. In recent years, he worked on multimillion-dollar projects across the US and internationally in Macau, Dubai, and Singapore. As a theatrical set designer, Calle has designed for a number of renowned regional theatre companies, including The California Shakespeare Theatre, The Eugene O'Neill Theatre Company, The Cuillo Theatre, Florida Stage, The Kirk Douglas Theatre, and The Colony Theatre. He has also served as a resident designer for Invertigo since the 2008 season.



DTP CLASS SCHEDULE

Mondays, 1:30pm-2:30pm at Electric Lodge in **Venice**

Tuesdays, 11:30am-12:30pm at Wallis Annenberg Center for the Performing Arts in **Beverly Hills**

Tuesdays, 1:30pm-2:30pm at LA Star Dance Studio in **Tarzana**

Thursdays, 1:30pm-2:30pm at Culver Palms YMCA in **Culver City**

MONTHLY

First Tuesday of every month, 11am-Noon at Plaza de la Raza in **Downtown LA**